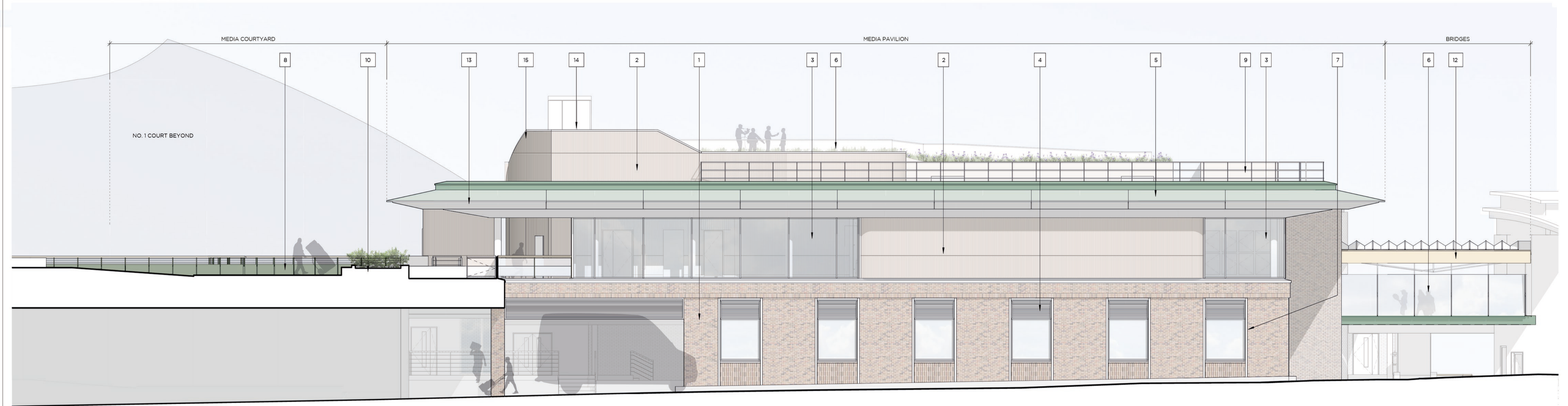


2 | East Elevation



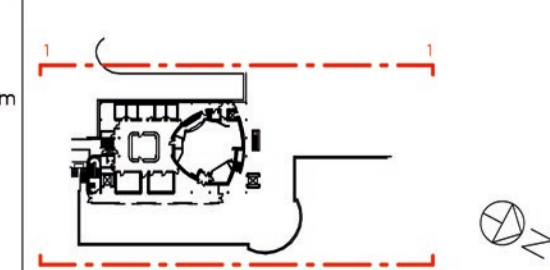
1 | West Elevation

PLAN KEY

| | | |
|------|----------|---------------------|
| Rev. | Date | Description |
| POO | 28/11/19 | Issued for Planning |
| POI | 13/12/19 | Issued for Planning |

MATERIAL KEY

| | | | |
|---|--|------------------------------|---|
| 1 Brick finish | 5 PPD green aluminium fascia, RAL 6007 | 9 Stainless steel balustrade | 13 Silver or light grey anodised aluminium soffit |
| 2 Terracotta cladding | 6 Glazed balustrade | 10 Planter (see LA drawings) | 14 Silver or light grey anodised aluminium cladding |
| 3 Full height glazing | 7 Pre-cast cill and surround to glazing | 11 Dark grey louvres | 15 Pre-cast coping |
| 4 Silver or light grey anodised aluminium louvres | 8 Timber balustrade with green metal frame and backing | 12 Retractable fabric roof | 16 Statutory manifestation |



Notes

- To be read in conjunction with all relevant information
- Do not scale from drawing
- Drawing issued for design intent only

LANGSTAFF DAY
ARCHITECTS

address 321 Edinburgh House, 170 Kennington Lane
London SE11 5DP

e-mail office@langstaffday.co.uk

suitability S3 - For review and comment

scale 1:100@A1
1:200@A3

project Media Pavilion
for AELTC
title GA East and West Elevation

drawing number 51336MP-LDA-0010-ZZ-DR-A-0240

rev. P01

This page is intentionally left blank